

3

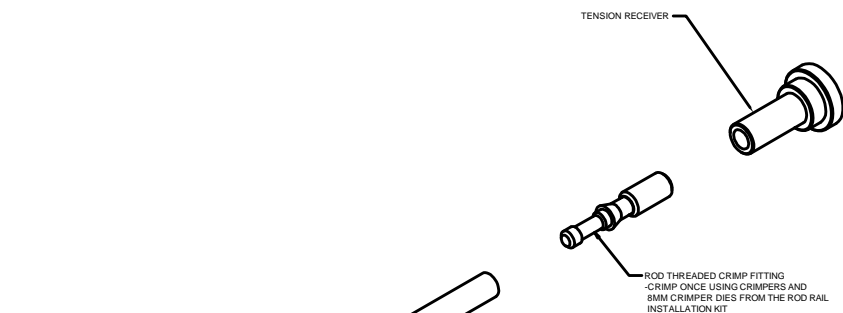
2

1

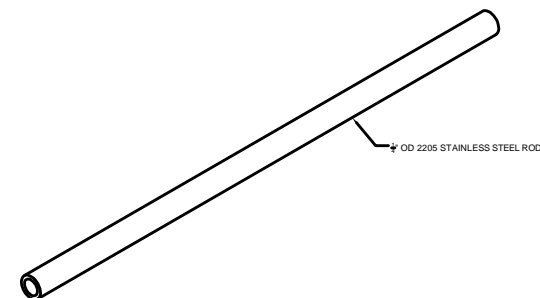
MINIMUM 1" THICK HANDRAIL

B

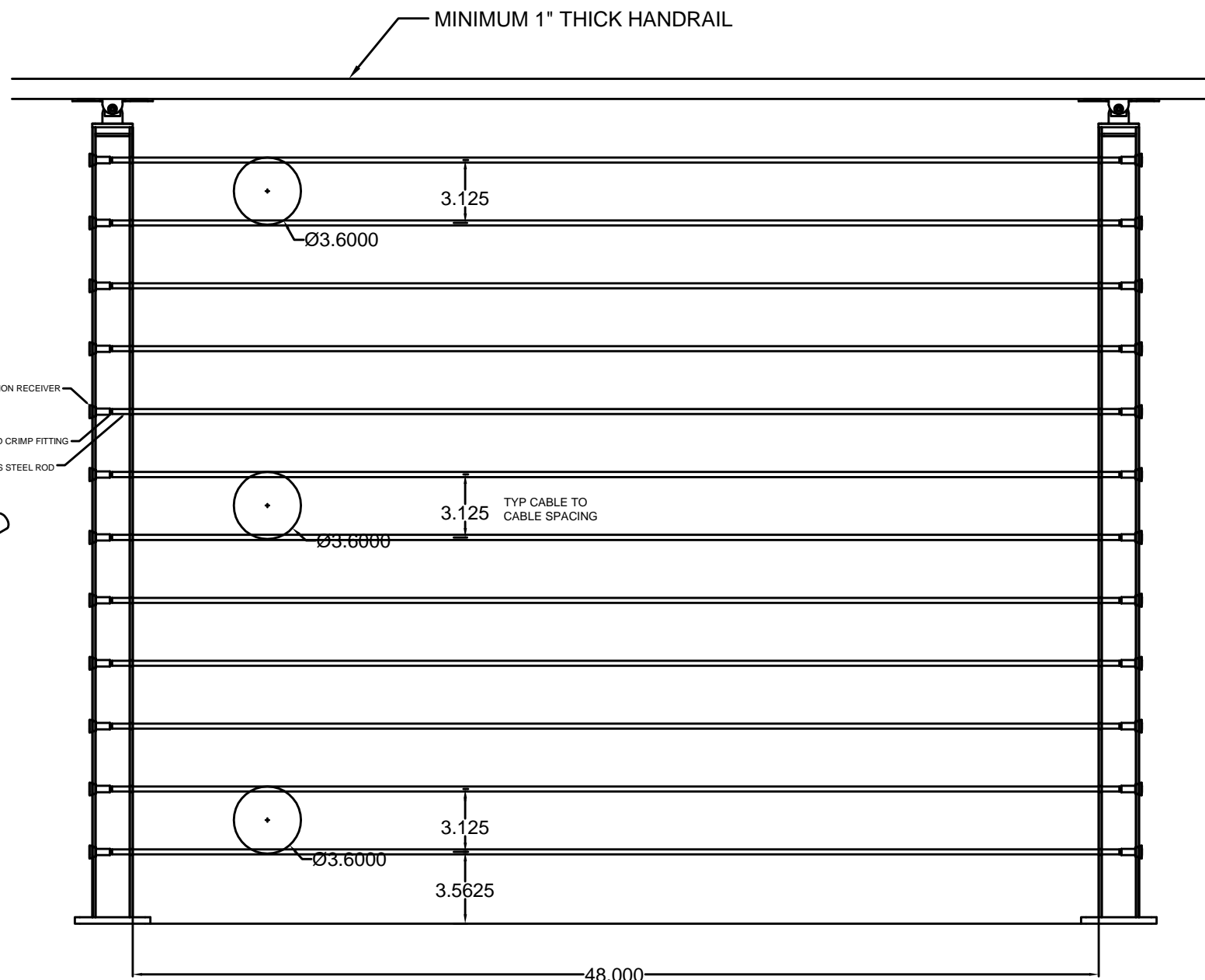
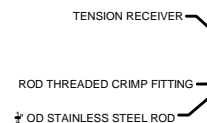
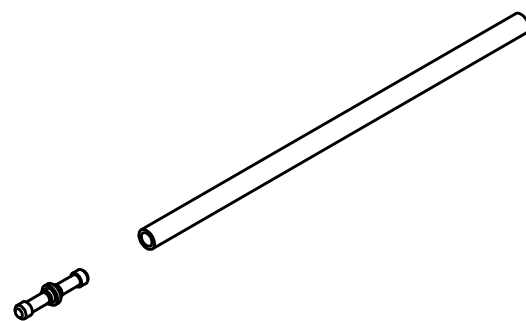
A



ROD TENSIONING FITTINGS DETAIL
NTS



ROD SPLICING FITTINGS DETAIL
NTS



- POSTS SHOULD BE NO MORE THAN 48" APART (INSIDE TO INSIDE DIMENSION)
- TENSIONING POSTS SHOULD BE NO MORE THAN 70' APART (INSIDE TO INSIDE DIMENSION) WHEN USING TENSION RECEIVERS.
- MEETS AND EXCEEDS 2012 IBC 1607.8.1

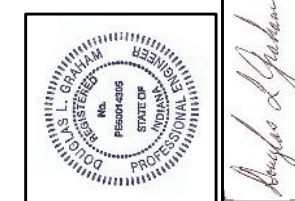
STANDARD 42" SURFACE MOUNT ROD INFILL POST AND CABLE SPACING DETAIL
NTS

POST TYPE	6061 - ALU 2X2X.150	SECTION MODULUS 0.369
POST HEIGHT	36" 39" 42"	TUBE BENDING M=13200"#
MAX HORIZ TOP LOAD	320# 295# 275#	fs = 35800 > 80,000
TOP LOAD @ FAILURE	455# 425# 395#	

NOTE: DESIGN LOADS ARE LIMITED BY FLOOR BASE MATERIALS AND FASTENER CONNECTION IN FLOOR MATERIALS. IT IS THE RESPONSIBILITY OF THE INSTALLER TO VERIFY THE CONNECTIONS WITH THE LOCAL DESIGN PROFESSIONAL.

TITLE	1" 2205 STAINLESS STEEL ROD LOAD AND DEFLECTION ENGINEERING TEST	
	SIZE	DWG NO
SCALE	NTS	
DRAWN	EMK	

VIEWRAIL
1722 EISENHOWER DR N
GOSHEN, IN 46526



GRAHAM ENGINEERING SERVICES
By Graham Enterprises, Inc.
28643 CO. RD, 50
Nappanee, Indiana, 46550 574-773-0415

02/05/2019

B

A